

# Specification

Prepared	Checked	Approved	Accepted	Confirmed	Approved

CE

RoHS

**3535B**  
SMD**Bare**  
**Lens**DC  
**24V**IP  
**20****5**  
Years

**Model:** ☉ Z6009WD

9pcs 3535B SMD LEDs (Samsung), 720\*27.5, equipped with lens, bare board series, constant current, 24Vdc, white LED rigid bar

**Picture:****Features:**

- ☉ Samsung 3535B LED guarantees high luminous efficacy;
- ☉ Special lens design makes light box lighting simple and easy, solving the problem of ripples, and guaranteeing high uniformity of surface illuminance of light box;
- ☉ Dimmable design, can adjust to optimal brightness in different time period, energy saving and environment conservation;
- ☉ CE, RoHS compliant, flame retardant rating is UL94V-2.

**Applications:**

- ☉ Suitable for indoor use in within 200cm width, 8-20cm depth single-sided light box or 14-40cm depth double-sided light box.

**Warranty:**

- ☉ 5 years or 22000 hours, whichever comes first

**Optical and Electrical Parameters:**

P/N	LED Color	CCT (K)	CRI	SDCM	Beam		lm	lm/W	V DC	mA	W/piece
					Angle	(°)					
Z6009WD	Pure White	6000	≥75	--	10*40		2412	124	24	800	19.5
	Warm White	3000	≥75	--	10*40		2034	104	24	800	19.5
	Daylight White	4000	≥75	--	10*40		2484	127	24	800	19.5

**Others:**

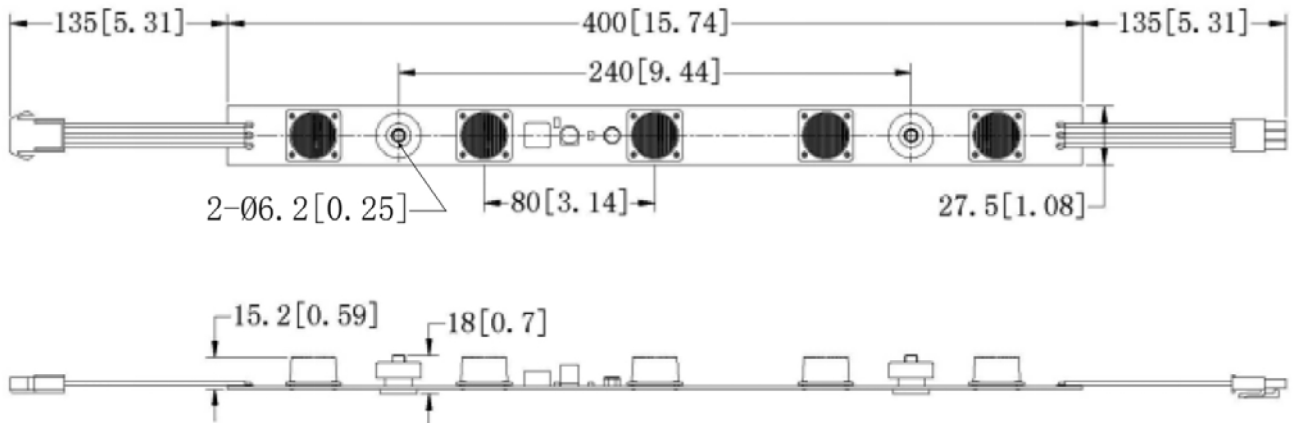
P/N	IP Grade	Operating Temp (°C)	Storage Temp (°C)	LED Qty (pcs)	Standard Length (mm)	Weight (g/pcs)
Z6009WD	IP20	-25~+60	-25~+70	9	720	174

## Notes:

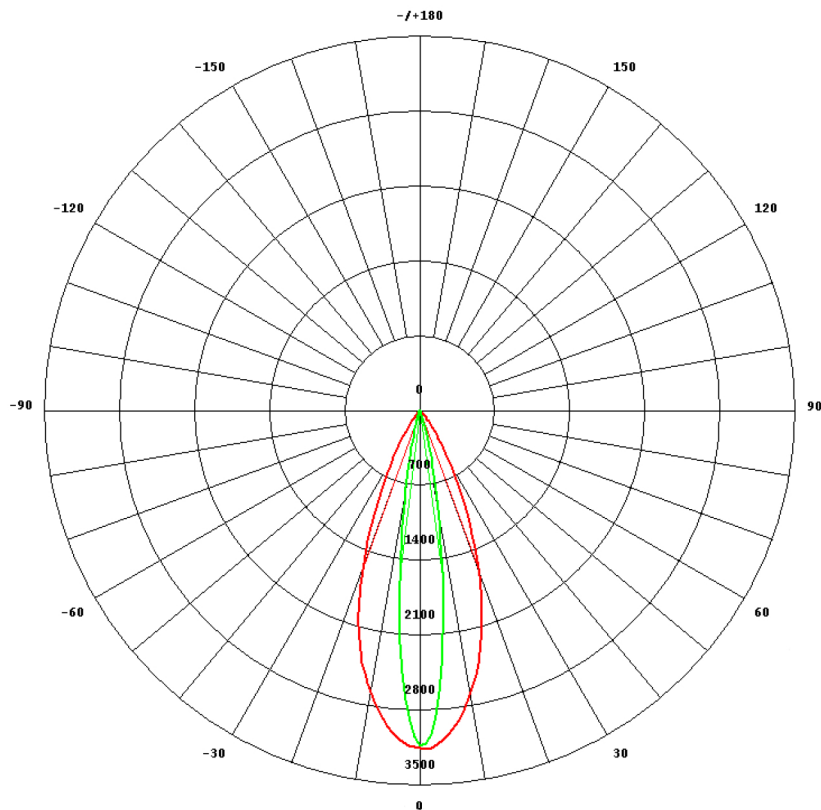
- ① Testing environment temperature:  $25 \pm 2^{\circ}\text{C}$  [ $77 \pm 3.6^{\circ}\text{F}$ ];
- ② The above “--” means the parameters are not required temporarily.
- ③ The actual data of each single product may differ from above typical data due to the particularity of manufacturing process.

## Profile Drawings:

Unit: mm[inch]



## Light Distribution Curve:



## Parts & Tools:

### Product Spare Parts



LED rigid bar



Bolt &amp; nut

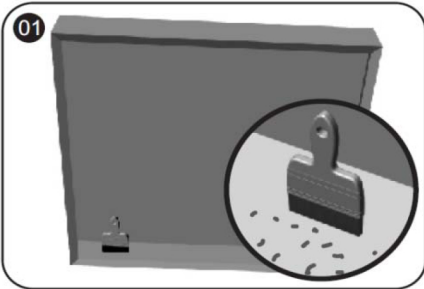
### Self-provided Tools



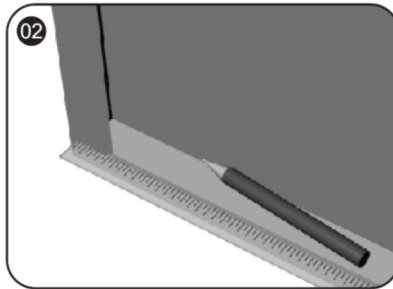
Electrical Drill &amp; Drilling bit

ST5.9\*10 Self-tapping screws or  $\phi$  6 rivets

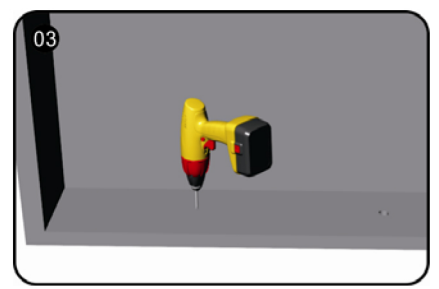
## Installation Steps:



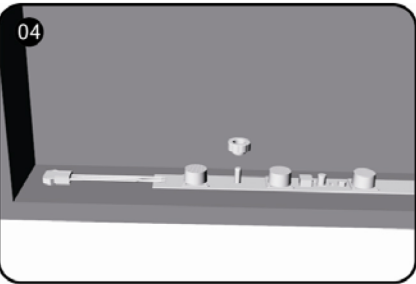
01 Clean the installing surface



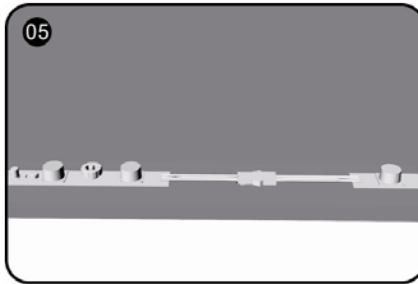
02 Mark the installing position



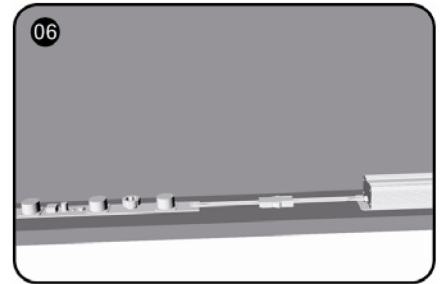
03 Drill bolt holes at the installing position



04 Fix the both ends of rigid bar by bolts and nuts.



05 Connect the rigid bar to rigid bar by terminals



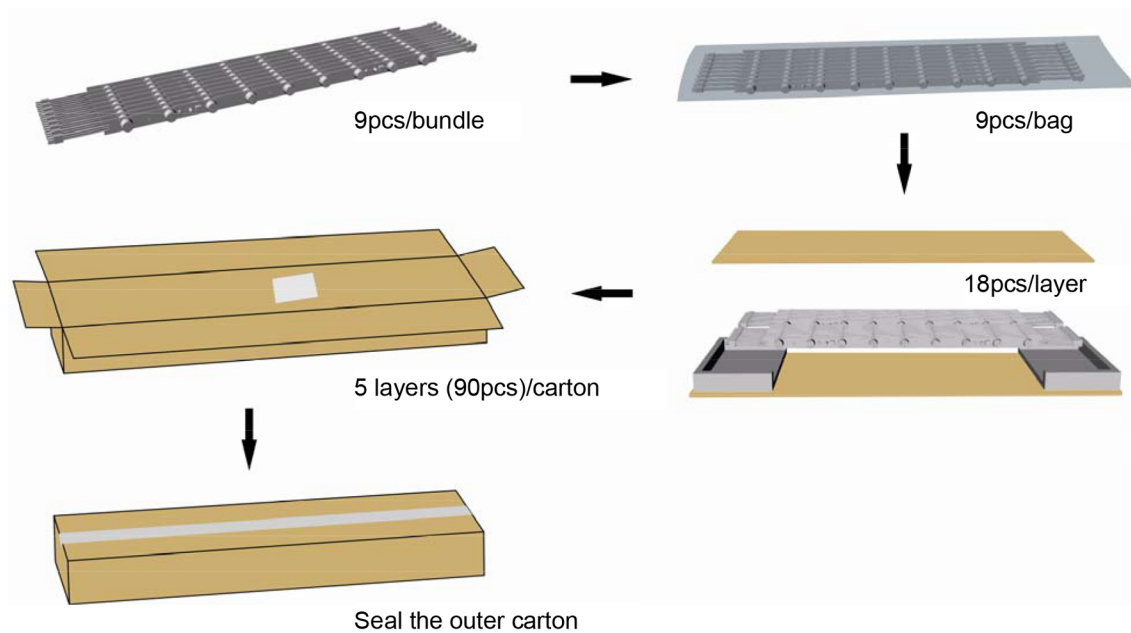
06 Connect to external power supply, and dispose with waterproof, insulation, anti-circuit and anti-corrosion protection. (connect to the PWM controller meanwhile if needed )

## Packaging Information:

P/N	Qty(pcs/layer)	Qty(layer/carton)	Total Qty(pcs)	Total Weight (Kg)	Outer carton size (mm)		
					length	width	height
Z6205WD	18	5	90	9.5	666	324	240

Notes: The actual packed quantity and weight subject to change without prior notice.

## Packaging Diagram:



## Connection Instruction:

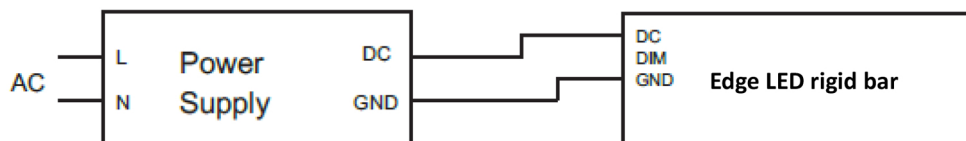


Figure 1: without controller

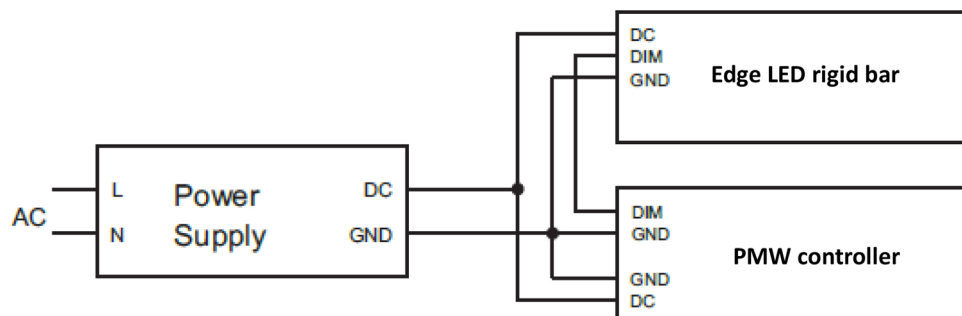


Figure 2: with controller

## Troubleshooting:

Malfunctions	Possible Causes	Solutions
All LEDs don't work	1. The power supply did not connect to power grid.	Power on
	2. No electricity due to short-circuit of external power supply.	Remove the malfunction caused by short-circuit, power on again.
	3. The wires of LED rigid bar connect to power supply output reversely.	Check the connecting and ensure the wires are connected correctly.
Part of LEDs don't work	1. Part of power supplies do not have output.	Check the power supply system.
	2. Part of rigid bar wires have malfunction.	
	3. Particular rigid bar connected reversely.	Correct connection
Brightness of LEDs is weak or uneven	1. Overloaded power supply;	Replace it with higher power supply
	2. The power loss of power circuit is huge or the power loss of each circuit existing big difference.	Ensure working voltage of rigid bars is within $\pm 5\%V$ of rated voltage. (1. Shorten the length of wires between the first rigid bar and power supply or replaced with wires with bigger diameter; 2. Ensure the cascading qty of string is less than or equal to the allowed maximum cascading qty, and each rigid bar cascading qty is well-balanced.)
	3. Exceed in qty of rigid bars in series.	Lessen the cascading qty for rigid bar and ensure the qty for each electrical circuit is within the maximum cascading qty.
LEDs are blinking	1. Poor contacted in the joints.	Find out and tackle malfunction immediately.
	2. Failures in power supply.	Replace power supply.

## Declaration:

---

- ⦿ If the external flexible cable of light box is damaged, please replace it by its manufacturer or its service agent or qualified person to avoid a hazard.
- ⦿ The specific installation and cautions please refer to the user manual.
- ⦿ The given data in this specification is based on our standard product. There may be existed slight difference compared with actual products.
- ⦿ All Illustrations in this specification are for reference only.
- ⦿ This product is subject to change or modify without prior notice.
- ⦿ RISHANG OPTOELECTRONICS CO., LTD reserves the right of final explanation for this specification.

<End>